

Quick Kudu Facts

Distinct Horns: Kudu are known for their impressive spiral horns, which can measure up to 1.8 meters (6 feet) in length for males.

Agile Leapers: Kudu are incredibly agile and can leap up to 3 meters (10 feet) high and 9 meters (30 feet) long.

Dietary Specialists: Kudu are primarily browsers, feeding on leaves, twigs, and fruits. They have a strong preference for certain plant species, which can sometimes lead to conflicts with livestock.

Social Animals: Kudu are social animals that live in herds of up to 20 individuals. These herds are typically led by a dominant male.

Vocal Communication: Kudu use a variety of vocalizations, including barks, grunts, and whistles, to communicate with each other.

Camouflage Masters: Kudu have a distinctive coat pattern that helps them blend in with their surroundings. This camouflage can make it difficult for predators to spot them.

Lifespan: Kudu can live for up to 15 years in the wild. Females tend to live longer than males.

Habitat Preferences: Kudu are found in a variety of habitats, including woodlands, savannas, and mountains. They prefer areas with plenty of cover and water.

Predators: Kudu are preyed upon by a variety of carnivores, including lions, leopards, cheetahs, and hyenas.

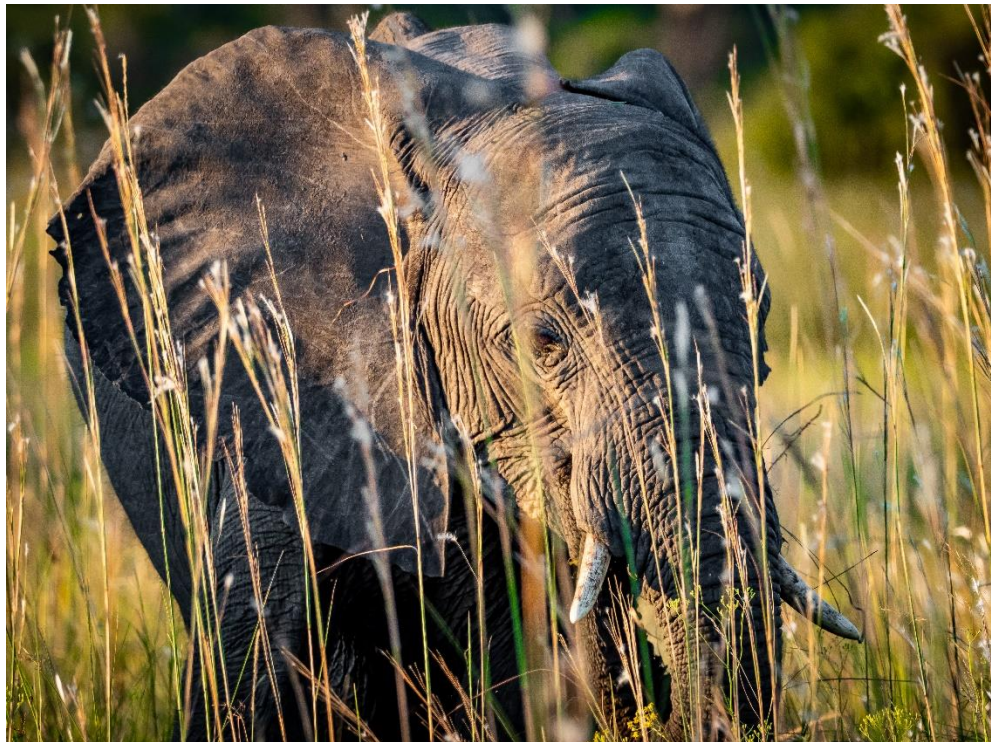
Conservation Status: Kudu are currently listed as "Least Concern" on the IUCN Red List. However, habitat loss and hunting are threats to their populations in some areas.

NEWSLETTER

September 2024 Issue

DEAR OLIFANTS FAMILY

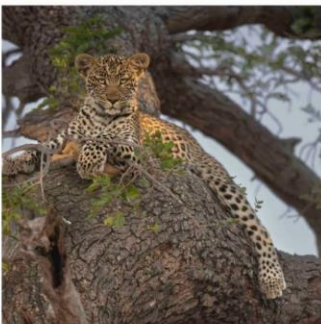
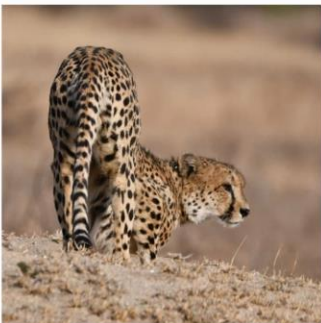
As the warm air of September sweeps across the Olifants River Game Reserve, we find ourselves immersed in the enchanting embrace of Spring. It is a season of rebirth, not only for the vibrant flora and fauna which call our reserve home, but also for our dedicated management team. The dry bushveld, parched by the long dry season, begins to slowly awaken, its dormant spirit stirred by the promise of early rains. Gently the landscape transforms into a symphony of greens and golds, as nature's artistry unfolds before our eyes.



ORGR GAME DRIVE

The Olifants River Game Reserve has continued to deliver exceptional wildlife encounters throughout July and August. Despite the dry and dusty bushveld conditions, the dramatic scenery has provided a stunning backdrop for unforgettable sightings. Leopard viewing has remained a highlight, with almost daily sightings of these elusive cats. Lions have also become more active in recent weeks, offering thrilling opportunities for members to witness their powerful presence. Elephant numbers have surged, with large herds roaming across the reserve. We were lucky enough to witness two distinct packs of Wild Dog this period. The recently released pack of 16 dogs has been particularly exciting to observe, while the smaller pack of five has also been active in the area. To add to the excitement, the male cheetah made a brief but memorable appearance in August, delighting visitors near the Sable Dam.

Overall, game viewing has been outstanding, with consistent sightings of zebra, kudu, giraffe, waterbuck, warthog, and the ubiquitous impala. The combination of exceptional wildlife encounters and the breathtaking beauty of the bushveld truly makes this corner of Africa a paradise!



CREATURE FEATURE: THE BLACK RHINOCEROS (*DICEROS BICORNIS*): ECOLOGY, BEHAVIOUR AND CONSERVATION



The black rhinoceros (*Diceros bicornis*), one of the two species of rhinoceros found in Africa, is a remarkable and critically endangered species known for its distinctive hooked upper lip, which is adapted for grasping leaves and twigs from bushes and trees. Once ubiquitous across the African savannas and grasslands, the black rhinoceros has seen dramatic declines in its population due to poaching and habitat loss. This essay explores the biology, behaviour, ecology, and conservation challenges facing this feisty species, underscoring the importance of efforts to preserve it.

Taxonomy and Distribution

The black rhinoceros belongs to the family Rhinocerotidae, which includes the white rhinoceros and the Indian rhinoceros among others. It is divided into several sub-species, including the southern black

rhinoceros (*Diceros bicornis bicornis*) and the critically endangered eastern black rhinoceros (*Diceros bicornis michaeli*). While historically widespread throughout sub-Saharan Africa, the black rhinoceros is now primarily found in fragmented populations in countries such as Kenya, Tanzania, Zimbabwe, and South Africa.

Physical Characteristics

Black rhinoceroses are smaller than their white counterparts, with adult black rhinos typically weighing between 450 kg to 1,130 kg and standing about 1.4 to 1.8 meters tall at the shoulder. They have two distinct horns made of keratin (the same protein that forms human hair and nails), with the front horn being larger than the rear. The overall body shape of the black rhinoceros is more compact and agile compared to the more massive white rhinoceros.

The black rhinoceros possesses thick, protective skin, which can be up to five centimetres thick in places. However, this skin is sensitive and prone to sunburn, leading black rhinos to frequently wallow in mud, which provides a layer of protection against the sun and assists in thermoregulation and parasite control.

Behaviour and Ecology

Black rhinoceroses are predominantly solitary animals, although they may form temporary associations, particularly mothers with calves. They are known for their elusive and cautious nature, often using their keen senses of hearing and smell to detect potential threats. Their eyesight is relatively poor, which further emphasizes the importance of their other senses in avoiding danger.

Feeding mainly on shrubs, bushes and trees, black rhinos are browsers, using their specialized lips to grasp and pull foliage. Their diet preferences can lead to significant impacts on vegetation in their habitats, promoting

ecological diversity. Through their feeding behaviour, black rhinos help shape the landscape, which benefits various other species in their ecosystem.

Breeding occurs throughout the year, with a gestation period of approximately 15 to 16 months. Typically, a female will give birth to a single calf, which will remain with her for up to three years, learning essential survival skills and foraging techniques.

Conservation Status

The black rhinoceros is classified as "Critically Endangered" by the International Union for Conservation of Nature (IUCN). The primary threats to their survival stem from poaching driven by the demand for rhino horn, as well as habitat loss due to agricultural expansion, human encroachment, and land degradation. It is estimated that black rhinoceros populations have been reduced by over 97% in the past century, with numbers dwindling to about 5,500 individuals as of recent assessments.

Conservation efforts are multi-faceted, focusing on anti-poaching measures, habitat conservation, and community engagement. Many protected areas across Africa have been established to safeguard remaining populations, including national parks and reserves. For instance, countries like South Africa and Kenya have implemented successful rhino conservation programs that involve intensive monitoring of rhino populations and habitat management.

Community-based conservation initiatives also play a critical role in the survival of black rhinoceroses. These programs often engage local communities in conservation efforts, providing education on the ecological importance of rhinos and promoting economic alternatives to poaching.

The black rhinoceros is a vital component of the African ecosystem, representing both the rich biodiversity of the continent and a poignant symbol of the challenges wildlife faces in the modern world. As critically endangered animals, their survival relies on effective conservation strategies that address both poaching and habitat degradation. Continued efforts from governments, conservation organizations, and local communities are crucial to ensuring that future generations can witness the majesty of the black rhinoceros in the wild. By fostering an environment where both wildlife and human needs can coexist, there is hope for the recovery of this extraordinary species and the habitats in which it lives.



CONSERVATION

Very dry conditions persist on ORGR



The reserve is currently experiencing an exceptionally dry spell, with rainfall levels significantly below those of last year. This deficit has put a strain on the ecosystem, particularly in terms of water availability. Watering holes, which are vital for wildlife, are facing supply and demand issues as the dry conditions persist.

Big Dam, a shallow body of water, is particularly vulnerable to the high evaporation rates and increased usage by large herds of elephants. The borehole, responsible for replenishing the water supply, is struggling to keep up with the demand, exacerbating the scarcity.

The dry conditions have also led to increased aggression and opportunistic behaviour among wildlife, such as elephants, vervet monkeys, and baboons. As natural food sources become scarce, these animals may resort to seeking sustenance from humans, making it imperative for residents to take precautions. It is advised to be vigilant, avoid tempting animals with food, and ensure that units are properly secured to prevent unwanted intrusions.

The Elephant Overpopulation Crisis in the Greater Kruger Area: Associated Private Nature Reserves Elephant Management Plan

In response to many questions and comments in relation to the increased elephant population and the destruction witnessed by our Members, we thought it important to share with you what is taking place in the APNR and Greater Kruger in developing an Elephant Management Plan. This growing population is putting immense pressure on our ecosystems, leading to habitat degradation, increased human-wildlife conflict, and potential long-term ecological consequences.

To address this pressing issue, the Associated Private Nature Reserves a network of private reserves adjacent to the GKNP, has been requested to compile a comprehensive Elephant Management Plan. This plan aims to strike a delicate balance between protecting the iconic African elephant and ensuring the health and sustainability of the park's ecosystem.



The below summarises the objectives and key consideration points used in the development of an elephant management plan. The plan has been prepared by APNR ecologists and is being assessed by Dr Mike Peel and Greg Martindale in accordance with South African National Norms and Standards. It is important for our members to know what is happening on the Great Kruger Landscape in terms of a plan to mitigate the Elephant population crisis we are experiencing in the region.

Objectives of the Plan

- Ensure the long-term survival of elephants within the APNR, considering their role in the ecosystem.
- Promote broader biodiversity and socio-economic goals of the APNR and the Greater Kruger Area.
- Maintain ecological integrity while acknowledging elephants are part of a complex system.
- Achieve specific ecological, commercial, and socio-economic objectives for elephants within each APNR reserve.
- Facilitate sustainable consumptive use of elephants through tourism and hunting in conjunction with outreach community feeding schemes.
- Assisting in creating small to medium enterprises for previously disadvantaged communities.
- Manage elephants scientifically and ethically, balancing biodiversity with human well-being.
- Study elephants in both ecological and social contexts.
- Minimize risks to human life, infrastructure, and livelihoods.

Responsibility for Implementation

The responsibility for implementing the plan falls on the management authorities of each nature reserve within the APNR. The APNR Joint Operations Committee (JOC) and Joint Management Committee (JMC) will coordinate joint management issues.

Key Ecological Considerations

Water Resource Management:

- Numerous rivers and artificial water sources exist within the APNR.
- Overuse by herbivores of artificial water points and its negatively impact vegetation.
- The ideal approach would be to provide water that mimics natural distribution without harming the ecosystem.

Sensitive Habitats and Species:

- The APNR landscape is a critical habitat for threatened species like vultures and eagles, reliant on tall trees for nesting and roosting. In addition, the natural habitat provides the sustainability of other threatened species. This habitat is under enormous pressure from the consumption of it by the over population of the elephant species, which is contributing to the risk to these other threated species.
- Elephants consume these trees and the natural habitat, potentially impacting these vulnerable species.
- Balancing elephant needs with those of other species is crucial to the long-term sustainability of the Open System.

Elephant Numbers and Densities:

- Elephant numbers have significantly increased since fences were removed between the Kruger National Park and APNR reserves.
- This coincides with a decline in tall trees, potentially impacting the ecosystem.

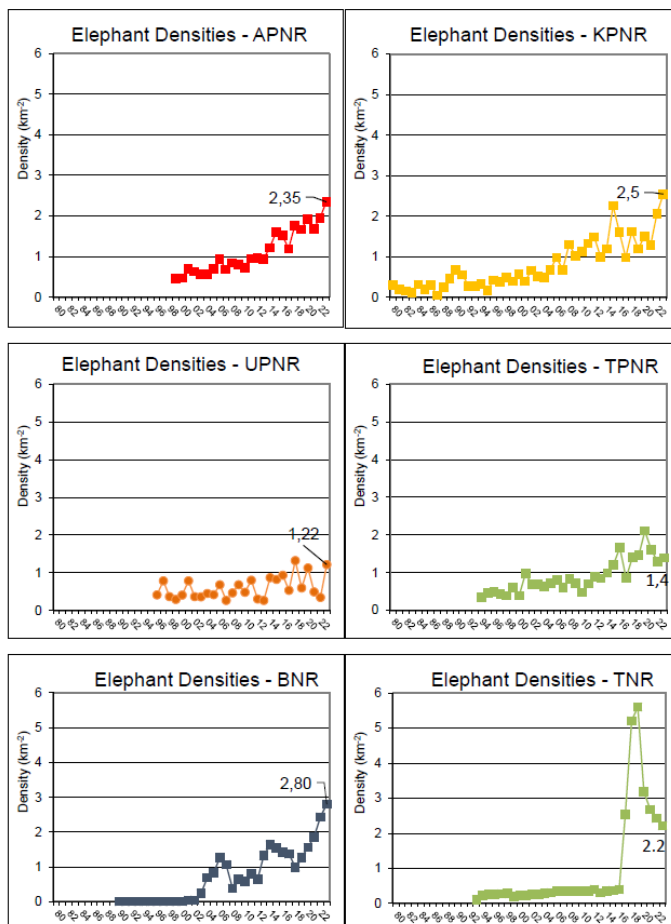


Figure 3 Elephant densities across the APNR and for individual reserves

- Understanding the relationship between elephant density, vegetation, and other animals is an essential requirement for the long term sustainability of the Open System.

Approach to Elephant Management

Elephant management is a complex issue. Culling, while potentially an option, raises numerous ethical, logistical, and safety concerns. Any decisions in developing this plan will be driven by the latest scientific research conducted by professional ecologist.

An adaptive management approach is recommended, involving:

- Rigorous planning and testing of management interventions.
- Making decisions based on best available information.
- Monitoring performance to improve future management.
- Stringent monitoring of impacts on large trees such as the study conducted in Balule recently.

Key Issues to Consider

- **Ecological Role and Objectives:** What is the role of elephants in the APNR ecosystem? What ecological thresholds should be considered?
- **Elephant Value:** How are elephants valued intrinsically, commercially (tourism, hunting), and community feeding schemes.
- **Management Strategies:** What elephant management options are acceptable?

While this plan is still in development, it is important to note that this issue is very high up on the Agenda of the APNR as well as the greater Kruger Open system. We are positive that the plan should be approved within the next three months. We will keep you informed as this process unfolds.

REACHING OUT



BALULE
OUTREACH TRUST

CASTING THE NET WIDER

During the month of August, Balule Outreach Trust (B.O.T.) welcomed two new members into the fold. Justine Bradfield (Portfolio Development) from neighbouring Jejane and Robyn Reid (Operations Manager) from ONGR have expanded the team which is now six-strong, including John Anderson (Founder & Chairman), Al Pearce (Trustee/Secretary), Susan Harwood (Trustee/Donation Procurement) and Bev Fourie (Trustee/legal).

FOOD FOR THOUGHT

Recently, B.O.T. sponsored accommodation and trophies for - and was highly instrumental in -staging a successful environmentally-oriented debate for high school learners (an often overlooked demographic for community work), within the Ba-Phalaborwa Municipality. This grew out of a meeting between Prof Mtungwa (GKEPF Community Liaison Officer), Patience Mdungazi (SANPARKS Senior Social Ecologist) & Robyn Reid (B.O.T. regionally-based representative) in March 2024.

The objectives behind this project aimed at engaging with high school learners, focussing specifically on environmental awareness & discussion around pressing local environmental issues as well as developing leadership qualities through communication & encouraging collaboration with schools to uplift learners. Participants in schools from Lulekani and Namakgale circuit were selected and a panel of external judges (three for the knock-out rounds and four for the finals) deliberated the presentations & confirmed the winners, posing additional questions to the teams. Foskor Primary School was kind enough to provide their venue for

both days over which the knock-out rounds were held & these rounds were successfully held on the 18th and 19th of July, with a total of five schools represented.

The finals took place on Friday 2nd August at Mopani Rest Camp. This event encouraged learners to think critically about the topic & to accomplish greater awareness regarding the positive impact of living with wildlife such as bio-diversity through environmental conservation/protection of endangered species, job creation through tourism, impact of habitat loss on us all & protection of natural resources for us all. Much was learnt by the organisers that will be considered and used going forward as we plan for future events of this nature. Robyn Reid says “The collaborative efforts between GKEPF, BOT and SANPARKS were phenomenal & we look forward to future opportunities to work together. The contributions from the main sponsors made this event possible & we would like to express our gratitude for their unwavering support & encouragement.”

DONATIONS

B.O.T. recently received a lot of new plastic tableware from Bags of Love in Johannesburg and numerous other donations such as clothing and bedding. These were handed over to the Drop In Centre in Maseke and enthusiastically received with great gratitude by Sinah Magomane and her team, for the 200 children in their after-school care programme. Bags of Love also donated 300 rulers & 300 ballpoint pens which will be donated to schools in the area.



Robyn Reid also tended to the centre’s faulty borehole pump which was out of action again due to an apparent tripping caused by electricity supply surges. Since the installation of the new borehole pump (sponsored by B.O.T.) the centre is again growing spinach, tomatoes and onions for the kitchens, providing much-needed nourishment for the children who attend the after-school care facility.



All enquiries regarding the Balule Outreach Trust may be mailed to :
info@baluleoutreach.org



MEMBERS UPDATES

WEATHER OVERVIEW

Right now, we're in a weather pattern called Neutral, which means neither El Niño nor La Niña is happening. Things might shift toward La Niña this summer, but we're not sure yet. It's best to keep an eye on things, as predictions get more accurate after winter.

Even though it's still spring, forecasts are looking good for rain this summer, especially in most of the areas that usually get a lot of rain in October, November, and December. But there might be less rain in the Limpopo region during the early summer. Spring is likely to be dry in most places.

El Niño and La Niña: Impacts on South African Weather

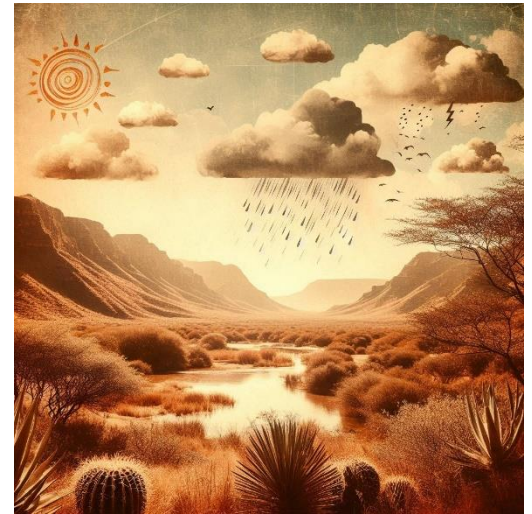
El Niño and La Niña are two opposite phases of a climate pattern in the Pacific Ocean called the **El Niño-Southern Oscillation (ENSO)**. They can have significant impacts on global weather patterns, including those in South Africa.

El Niño

- **Warming:** During El Niño, the surface waters of the central and eastern Pacific Ocean become unusually warm.
- **Trade Winds:** The trade winds that typically blow from east to west weaken or even reverse direction.
- **Weather Impacts in South Africa:**
 - **Droughts:** El Niño often leads to drier conditions in South Africa, particularly in the southern and western regions.
 - **Heatwaves:** Temperatures can rise above average, leading to heatwaves in some areas.
 - **Reduced Rainfall:** Rainfall is generally lower than normal during El Niño years.

La Niña

- **Cooling:** During La Niña, the surface waters of the central and eastern Pacific Ocean become unusually cool.
- **Strong Trade Winds:** The trade winds strengthen, blowing from east to west more intensely than usual.
- **Weather Impacts in South Africa:**
 - **Increased Rainfall:** La Niña often brings above-average rainfall to South Africa, especially in the eastern and northern regions.
 - **Flooding:** Heavy rainfall can lead to flooding in some areas.
 - **Cooler Temperatures:** Temperatures may be slightly cooler than average during La Niña years.



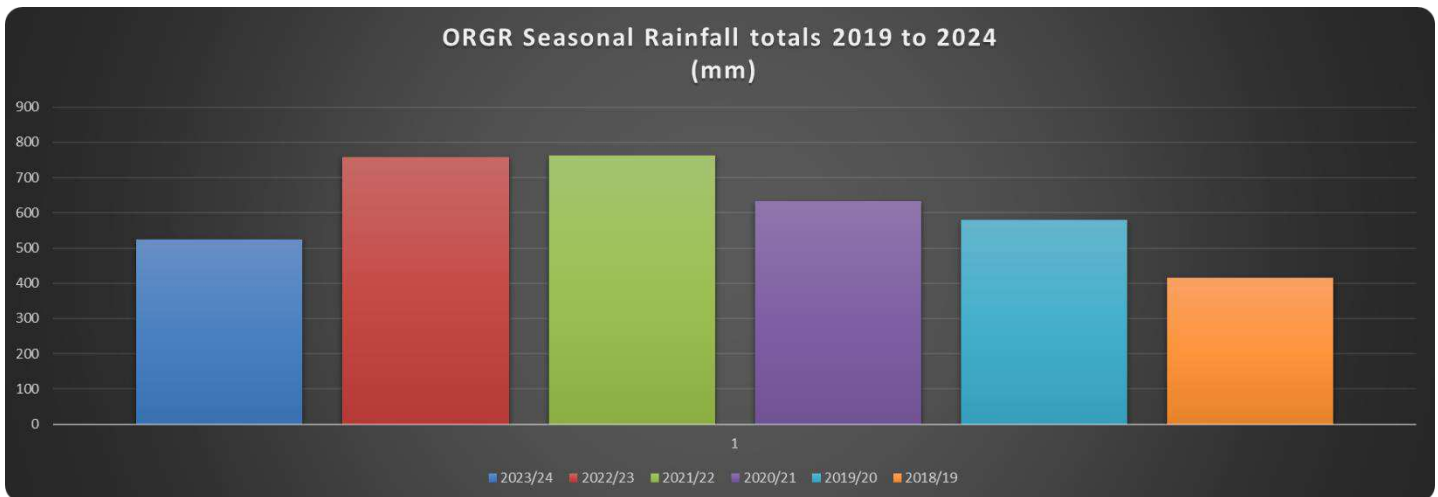
Key Differences and Impacts on South Africa:

Feature	El Niño	La Niña
Surface Water Temperature	Warmer	Cooler
Trade Winds	Weakened or reversed	Strengthened
Weather Impacts in South Africa	Droughts, heatwaves, reduced rainfall	Increased rainfall, flooding, cooler temperatures

It's important to note that the specific impacts of El Niño and La Niña on South African weather can vary from year to year, and other factors like natural climate variability also play a role. However, understanding these climate phenomena can help us better prepare for and adapt to changing weather patterns.

ORGR Local Weather

We have closed the 2023/24 rainfall season at the end of August with 525,26mm of rain received. This is



significantly less than previous years and slightly above the areas annual average.

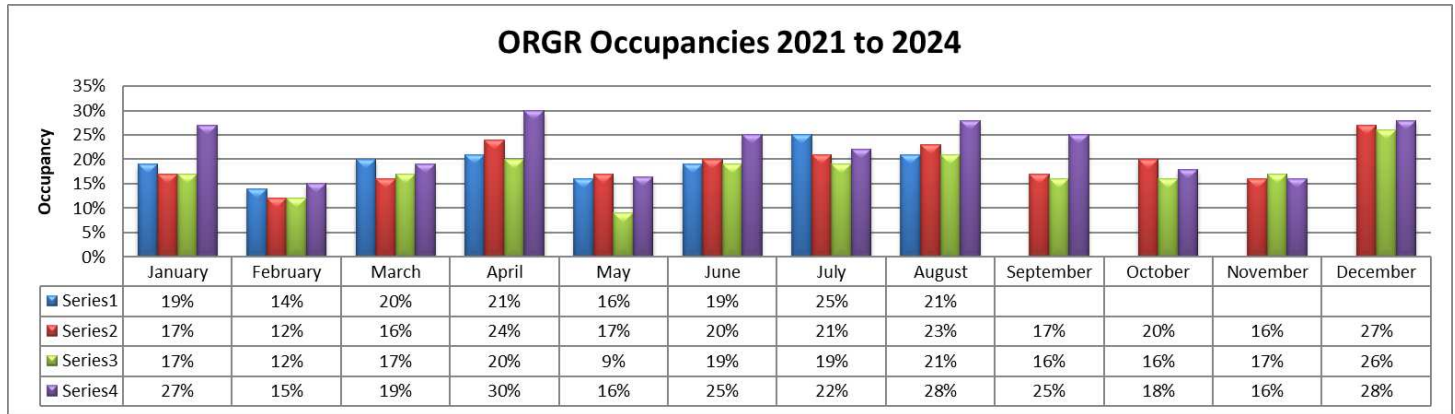
We have had some incredible temperature ranges in the last two months, ranging from a low of 3,9 degrees in July to a maximum of 38.8 degrees in August.

July 2024 Weather Summary - ORGR	High	Low	Average	August 2024 Weather Summary - ORGR	High	Low	Average
Temperature	35.8 °C	3.9 °C	19.8 °C	Temperature	38.8 °C	9.1 °C	21.2 °C
Dew Point	17.3 °C	-11.2 °C	5.4 °C	Dew Point	16.6 °C	-8.3 °C	10.0 °C
Humidity	96 %	10 %	46 %	Humidity	93 %	10 %	54 %
Precipitation	0.27 mm	--	--	Precipitation	0.80 mm	--	--
Wind Speed	29.5 km/h	0.0 km/h	5.4 km/h	Wind Speed	29.9 km/h	0.0 km/h	5.5 km/h
Wind Gust	37.0 km/h	--	7.4 km/h	Wind Gust	40.1 km/h	--	7.8 km/h
Wind Direction	--	--	SW	Wind Direction	--	--	SSE
Pressure	1,016.42 hPa	997.36 hPa		Pressure	1,019.47 hPa	1,000.03 hPa	--

OCCUPANCIES

July and August have been busy months on the reserve seeing an average occupancy of 25% in July and 21% in August. Our busiest day in August saw 35 units in residence over the Women’s Day long weekend and our quietest day had 11 units occupied. 2024 is building up to be one of the busiest years on the reserve since the covid era.

Average Occupancies	
2024	19%
2023	18%
2022	17%
2021	22%
2020	22%
2019	14%



The Southern Night Skies in September 2024: A Celestial Showcase

As the Southern Hemisphere transitions from winter to spring, the night skies in September 2024 offer a dazzling array of celestial wonders. From vivid constellations to awe-inspiring planetary alignments, this month promises a feast for stargazers. In addition to its astronomical highlights, September's skies are also rich with mythological and historical stories that add depth and intrigue to our nightly observations.

Celestial Highlights

1. The Great Square of Pegasus

One of the most prominent features of the September sky is the Great Square of Pegasus, an asterism formed by four bright stars that outline the body of the mythical winged horse. As September unfolds, the Great Square becomes a striking fixture in the evening sky, making it an excellent reference point for locating other celestial objects. Its presence serves as a prelude to the transition of summer constellations, and its visibility is a reminder of the impending shift in the night sky's seasonal canvas.

2. The Andromeda Galaxy

September nights offer ideal conditions for viewing the Andromeda Galaxy, our closest spiral galaxy neighbour. Situated just north of the Great Square, this galaxy is visible to the naked eye as a



faint smudge of light. With a telescope or binoculars, however, its spiral structure becomes apparent. Andromeda's presence in the night sky serves as a reminder of the vastness of the universe and our place within it. This galaxy is on a collision course with the Milky Way, expected to merge with our galaxy in about 4.5 billion years—a cosmic event that will redefine the night skies for future generations.

3. Planetary Alignments

September 2024 is notable for its planetary alignments, particularly the close approach of Mars and Venus. Both planets will be visible in the evening sky, with Venus shining as a brilliant beacon and Mars appearing as a distinct reddish object. This conjunction of Mars and Venus provides an excellent opportunity for amateur astronomers and casual observers alike to appreciate the dynamic nature of our solar system. Additionally, the outer planets—Jupiter and Saturn—are prominent in the early morning sky, with Jupiter's moons and Saturn's rings visible through even modest telescopes.

4. Meteor Showers

September's skies are graced by the Draconid meteor shower, which typically peaks around mid-month. Though not as prolific as the Perseids or Leonids, the Draconids offer a chance to observe some spectacular shooting stars. The meteors, originating from the constellation Draco, can produce bright, slow-moving meteors, creating memorable visual displays for those lucky enough to catch them.

Astronomical Stories and Mythology

1. The Myth of Pegasus

The constellation Pegasus is steeped in mythology. In Greek mythology, Pegasus was a winged horse born from the blood of Medusa when she was slain by Perseus. The horse is often depicted as a symbol of poetic inspiration and celestial beauty. According to legend, Pegasus was tamed by the hero Bellerophon and helped him defeat the monstrous Chimera. The constellation represents the enduring power of myth and its influence on our interpretation of the night sky.

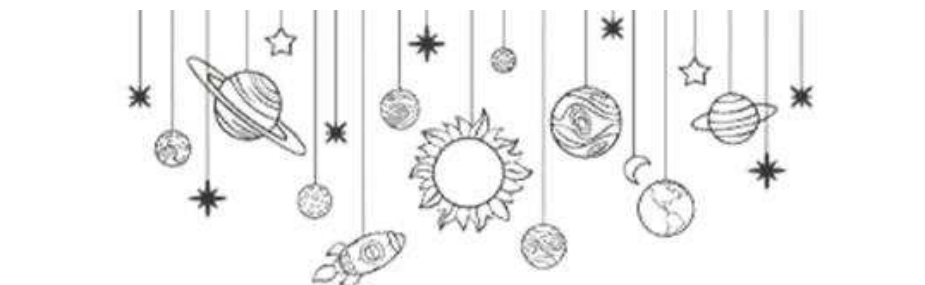


2. The Legend of Andromeda

The Andromeda Galaxy takes its name from the Greek princess Andromeda, who was famously chained to a rock as a sacrifice to a sea monster. Her story is intertwined with that of Perseus, who ultimately rescued her. The Andromeda Galaxy's name reflects the ancient belief that the stars and their patterns were more than just points of light—they were interconnected with human stories and destinies.

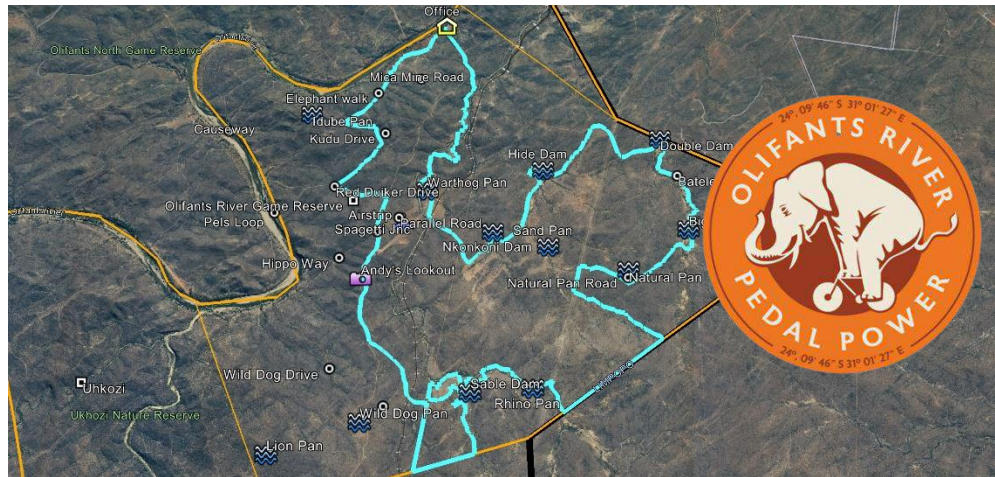
3. The Dragon of Draco

The constellation Draco represents a dragon in Greek mythology, often associated with the Titan Atlas. In one version of the myth, Draco was placed in the sky by the goddess Athena as a reward for guarding the golden apples of the Hesperides. The constellation's winding shape mirrors the dragon's serpentine form and serves as a testament to the enduring allure of dragon myths across cultures.



PEDAL THROUGH PARADISE: A HUGE SUCCESS FOR OLIFANTS RIVER GAME RESERVE!

We're thrilled to share a fantastic update on the Pedal Power Fundraising Event at Olifants River Game Reserve (ORGR)!



A Weekend of Adventure and Conservation

Over two incredible days, 50 enthusiastic cyclists embarked on a journey through the heart of our reserve. With two challenging yet rewarding 40km routes, participants not only tested their physical limits but also experienced the magic of encountering wildlife in their natural habitat.

Sightings to Remember

The reserve truly came alive for our pedal-powered explorers. Imagine rounding a corner and coming face-to-face with a majestic herd of buffalo, or spotting a herd of elephants in the distance. These unforgettable moments made the ride even more special.

A Festive Atmosphere for a Worthy Cause

The event wasn't just about the challenge; it was also a celebration! A festive atmosphere filled the air with camaraderie and a shared passion for conservation. We enjoyed delicious meals, lively conversations, and a true sense of community spirit.



Thank You for Making a Difference

Most importantly, thanks to the incredible efforts of our riders, sponsors, and everyone involved, we successfully raised significant funds for two critical initiatives: Anti-Poaching and Community Outreach Projects. Your contributions will directly support the fight against wildlife crime and empower local communities.



A Heartfelt Thank You

From the bottom of our hearts, we extend a massive thank you to all who made this event a resounding success:

- The courageous riders: Your dedication and enthusiasm were truly inspiring.
- Our generous sponsors: Your support made this event possible.
- The ORGR team: Your tireless efforts ensured a smooth and memorable experience for everyone.



We look forward to welcoming you back for the next Pedal Power adventure!

RULES AND REGULATION REMINDERS

It is necessary sometime to remind ourselves of the rules and regulations of our reserve to ensure everyone has the most enjoyable experience and that we do so in the most respectful way. Please adhere to the following rules which have all cropped up in the last two months.

1. Lighting:

- **LED Light Bars:** Strictly prohibited, both bumper and canopy mounted.
- **Spotlights:** Conventional bumper mounted spotlights are allowed only when used in conjunction with the vehicle's standard high beam.
- **Handheld Spotlights:** No more than two standard type handheld spotlights are permitted. LED spotlights must not exceed the equivalent of a 100-watt halogen globe.

2. Private Vehicle Usage:

- **Prior Consent:** Private vehicles cannot be used for game viewing without management's approval.
- **Restricted Areas:** Private vehicles are only allowed on Office Road, Entry/Exit, Members Way, Elephant Walk, Morgans Bend and Red Duiker.

3. Dam and Waterhole Etiquette:

- **Avoid Alighting:** Do not get out of your vehicle within 200 meters of a dam or waterhole to avoid disturbing the game and maintaining a visually appealing environment.

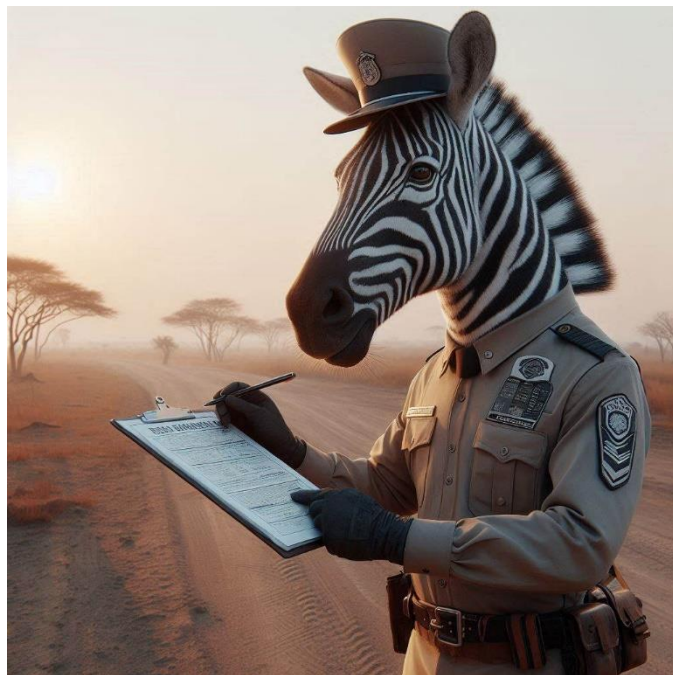
4. Animal Attraction:

- **No Recordings:** Refrain from using any form of recording to attract the attention of animals.
- **Feeding:** No feeding of any animals is permitted including leaving food out for birds and other animals to eat.

By following these guidelines, we can collectively contribute to a harmonious and memorable experience for all visitors to Olifants Rivier Game Reserve.

RHINO PAN HIDE: SHINGLE EXAMPLE

Rhino Pan hide has had a facelift with a new shingle roof installed in August with compliments of GISSA TruDefinition Duration Shingle South Africa. The ORGR Board has been searching for a suitable alternative to thatched roofs due to insurance concerns. They considered various options but rejected most for aesthetic reasons or lack of suitability. Alternatives like Cliplock, Cement tile, IBR, corrugated sheets, Harvey Tile, and synthetic thatch were explored. The board doesn't recommend re-roofing all thatched structures but suggests shingle as an aesthetically pleasing option for those considering a change.



Next time you are on the reserve, swing past Rhino Pan and have a look for yourselves. We all believe this to be a very suitable Thatch Alternative!

THE FINAL WORD

As we bid farewell to the crisp days of winter and welcome the warmth and vibrancy of spring, we are reminded of the incredible beauty and resilience of our beloved Olifants River Game Reserve. This season brings with it new beginnings, as nature awakens from its slumber and the landscape bursts into life. Let us cherish the opportunity to witness the magic of spring unfold in our private piece of Africa, and continue to work together to preserve and protect this precious sanctuary for generations to come.

*“Golden hues paint the sky above,
As the sun descends, a lover's dove.
Shadows dance across the savanna's
plain,
As twilight's hush begins to reign.
Lions roar, a mournful sound,
As darkness creeps, all around.*

Warmest regards!

***Nick and the Olifants River
Game Reserve Team***

